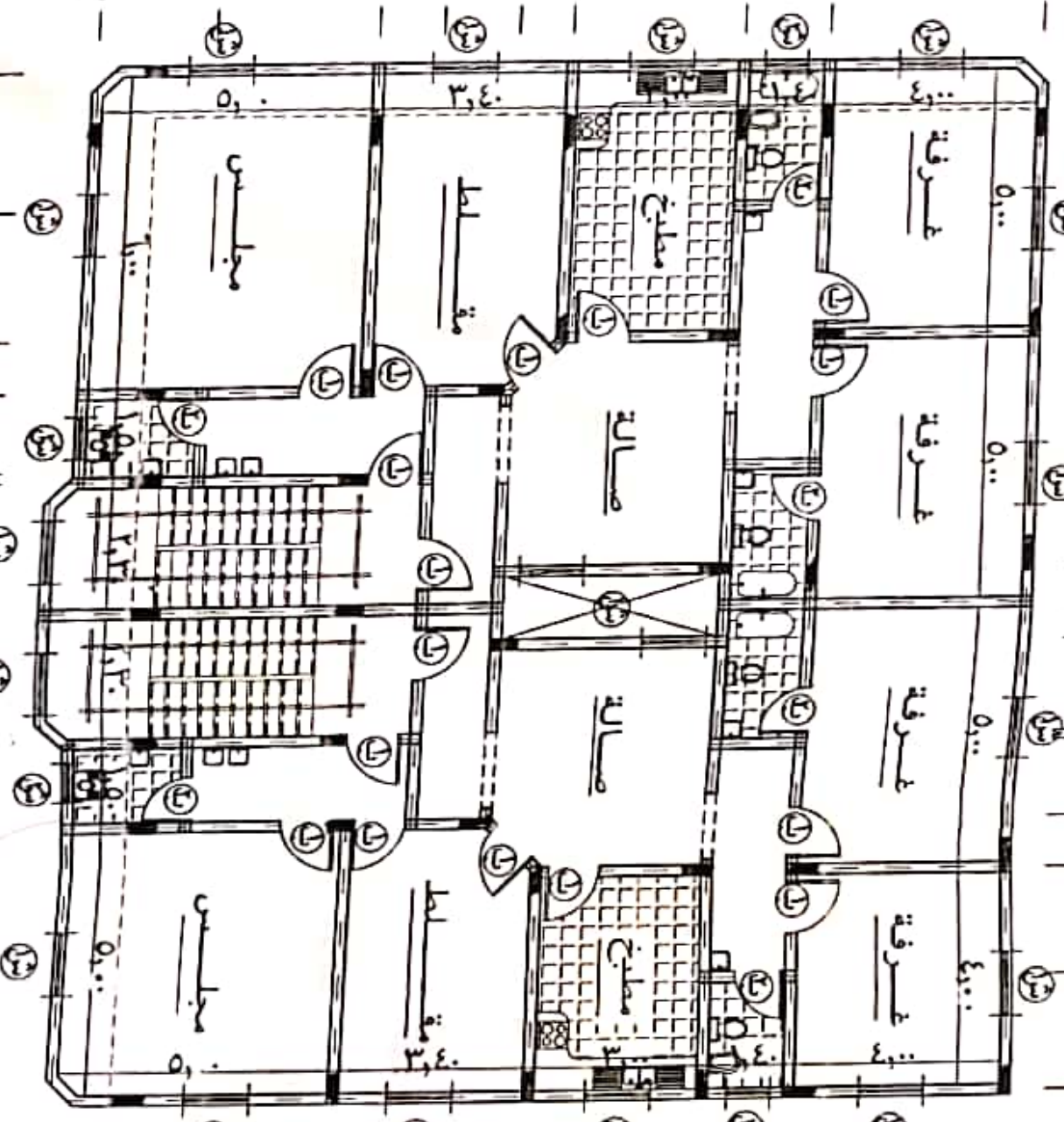


1 2 3 4 5 6 7 8

1.1 4.2 1.7 3.2 1.1 1.4 1.2 2.0 3.2 2.0 2.0

3 2 1

2.7 2.5 1.0 1.5 1.0 1.8 1.7 1.2 1.8 1.5 1.0 2.0 2.2 1.1



1 2 3 4 5 6 7 8

1.1 4.2 1.7 3.2 1.1 1.4 1.2 2.0 3.2 2.0 2.0

2.7 2.5 1.0 1.5 1.0 1.8 1.7 1.2 1.8 1.5 1.0 2.0 2.2 1.1

